

How to upgrade firmware for indoor fixed camera

Suitable for MJPG camera: FI8907W, FI8909W

Please check the model number and current firmware version before upgrading. You can find your model number on the bottom sticker and your firmware version under Device Status menu.

Only firmware 11.35.2.63 **can** upgrade to this version, the other versions cannot upgrade to this version.

Updating with wrong firmware could severely damage and/or break your camera, please make sure the firmware is correct and update at your own risk.

Note: After upgrading to this version, it cannot downgrade to previous versions.

Preparation for upgrading:

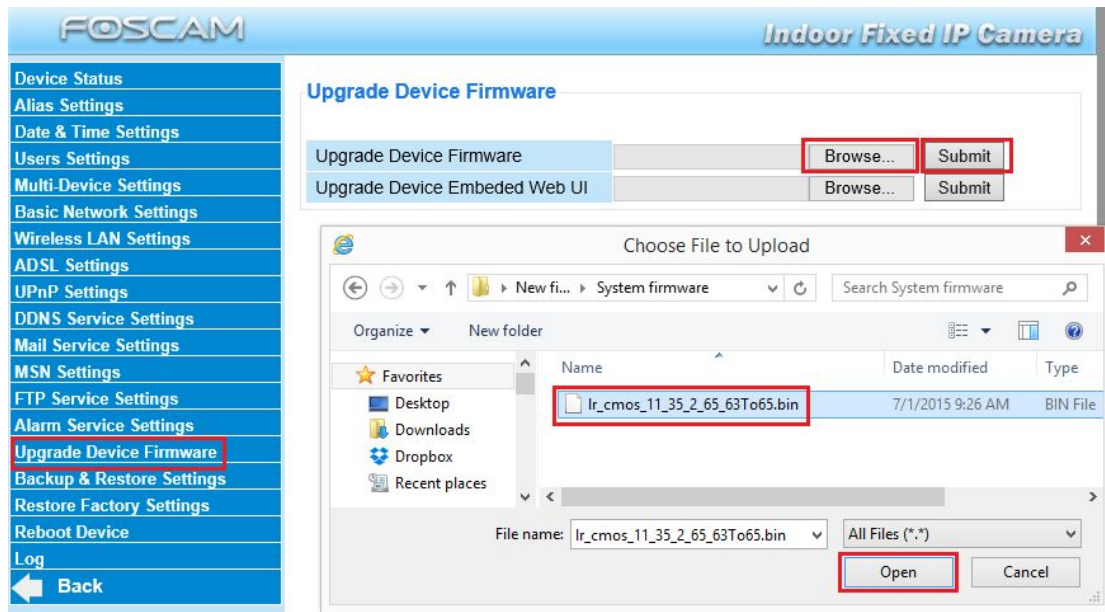
- 1) Please restart your camera before the upgrading;
- 2) Plug in the Ethernet cable to upgrade firmware, not via wireless;
- 3) Upgrade the system firmware firstly and web UI secondly;
- 4) Keep power on during the upgrading.

Step 1: Login your camera as an administrator, and go to **Device Management** → **Upgrade Device Firmware**.

Step 2: Update System firmware firstly.

Click **Browse** → select system firmware **Ir_cmos_11_35_2_65_63To65.bin** → click **Open** → click **Submit**. After camera reboot itself, the system firmware is loaded successfully.

Note: Do not shut down the power of the camera before IP Camera Tool search the IP again!

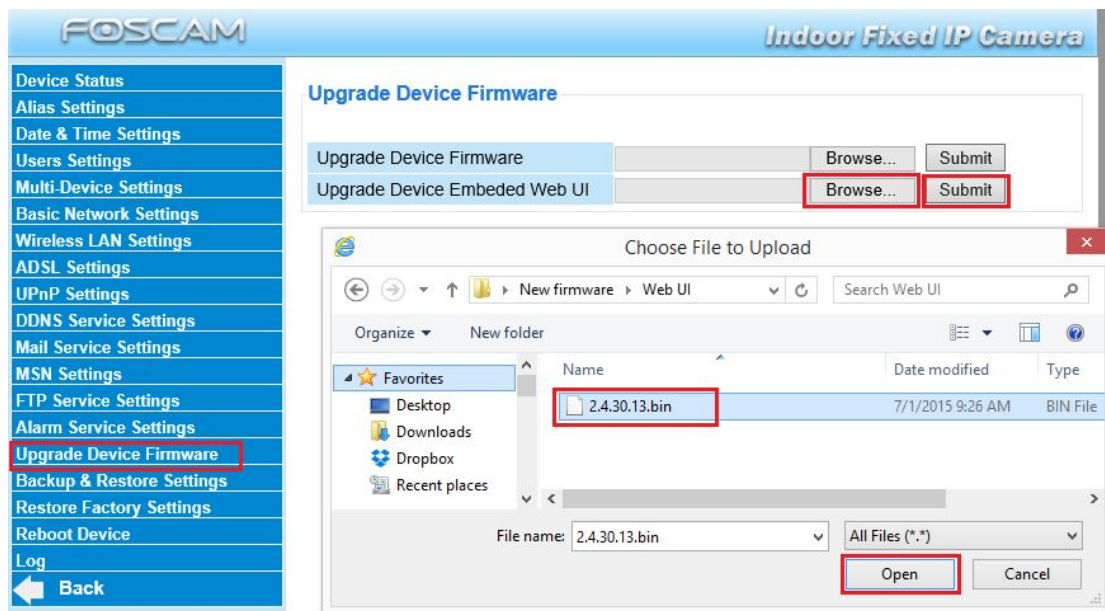


Step 3: Update Web UI firmware secondly.

Click **Browse** → select Web UI firmware **2.4.30.13.bin**→ click **Open** → click **Submit**.

After camera reboot itself, the Web UI is loaded successfully.

Note: Do not shut down the power of the camera before IP Camera Tool search the IP again!



Step 4: You can check new firmware versions under **Device Status** page.

Device Status

| | |
|--------------------------------|--------------|
| Device ID | C4D6553A83A6 |
| Device Firmware Version | 11.35.2.65 |
| Device Embedded Web UI Version | 2.4.30.11 |
| Alias | FI8909W |
| Alarm Status | None |
| DDNS Status | No Action |
| UPnP Status | No Action |
| MSN Status | No Action |

End

by Foscam Technical Support Team